

BY PULSEN

By Pulsen is an urban intervention to bring nature as a catalyst of revitalization of the Copenhagen harbor front. Located in the neighborhood of Christianhavn, it is consist of pedestrian bridge, whose primary steel structural, anchors winter community garden, as nexus of social gathering and environmental education. The structural steel echoes the heartbeat of vibrant and energetic city, facilitating the pedestrian and cyclist circulation around the water while connecting the surrounding community to the beautiful landscape of the glorious fortification of Danish past.

The structural steel spans over the harbor to allow the passage of small boats and behave triangular system, to support of the passage of pedestrian to the old fortification. It emerges above the deck above main circulation avenues on the site.

The community garden is designed as an extension of the historical fortification of the city, however enclosed to provide warmth and shelter during the winter months. The site is designed to capitalize on the constant pedestrian movement along the harbor front by providing green space and outdoor sitting areas.

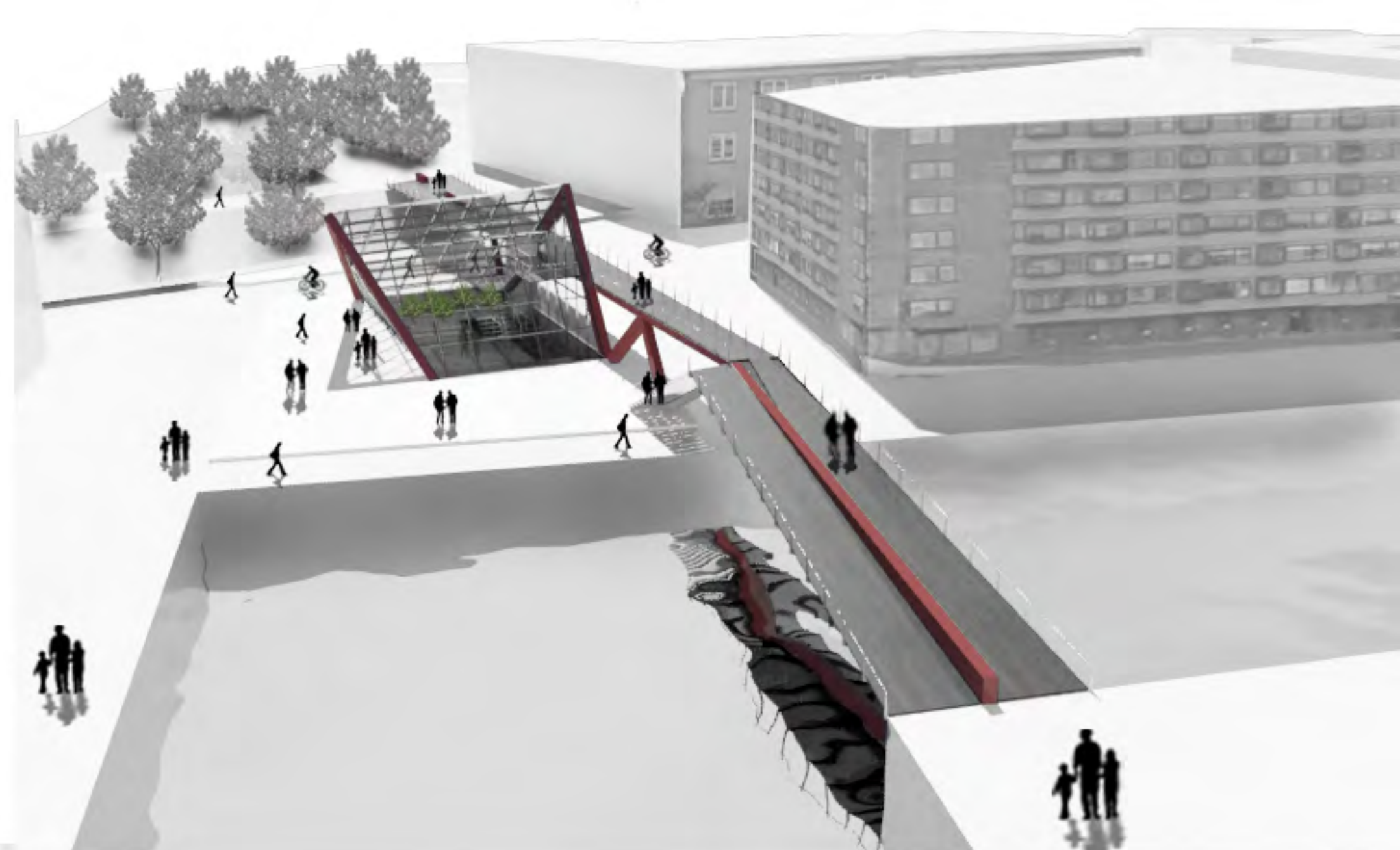
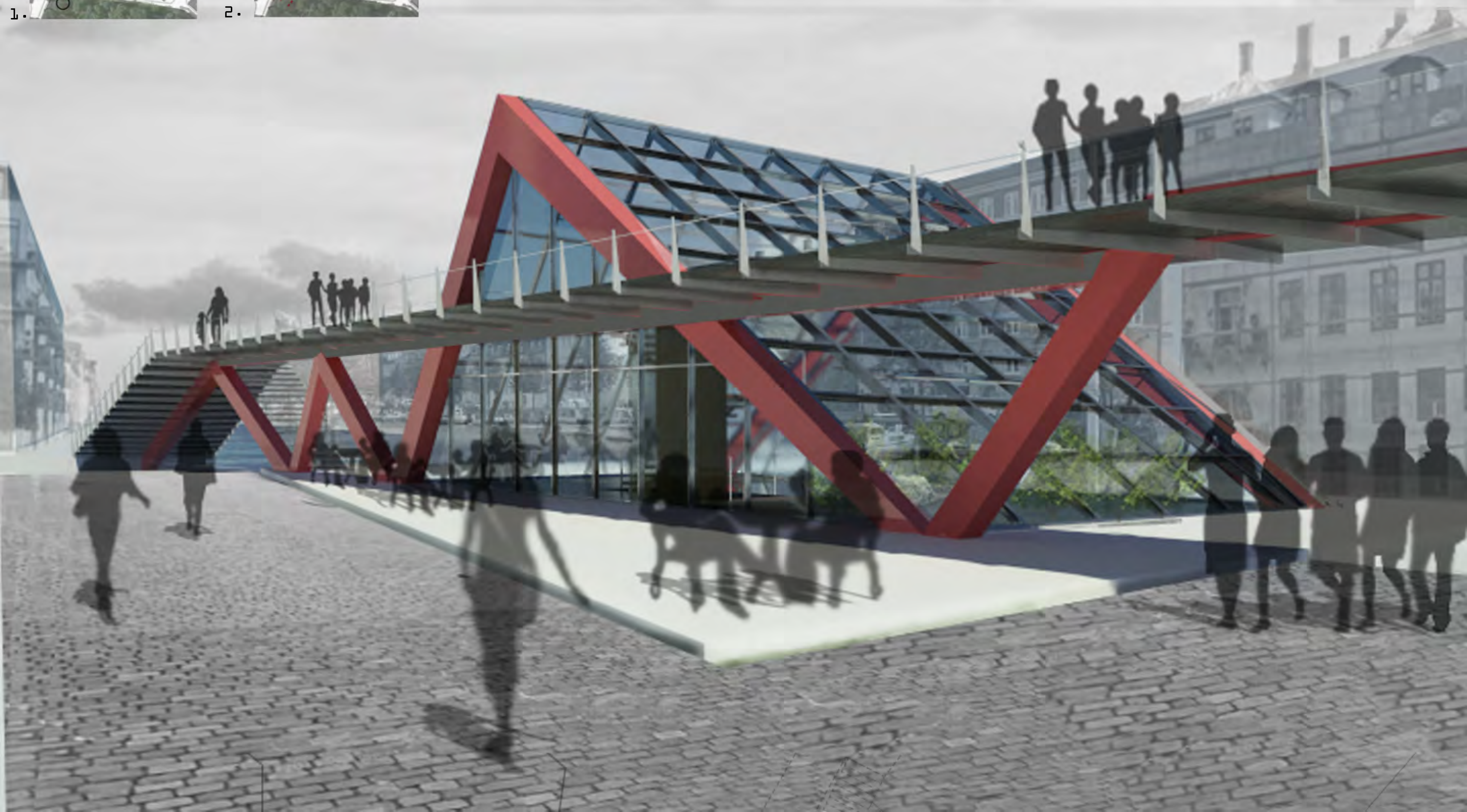
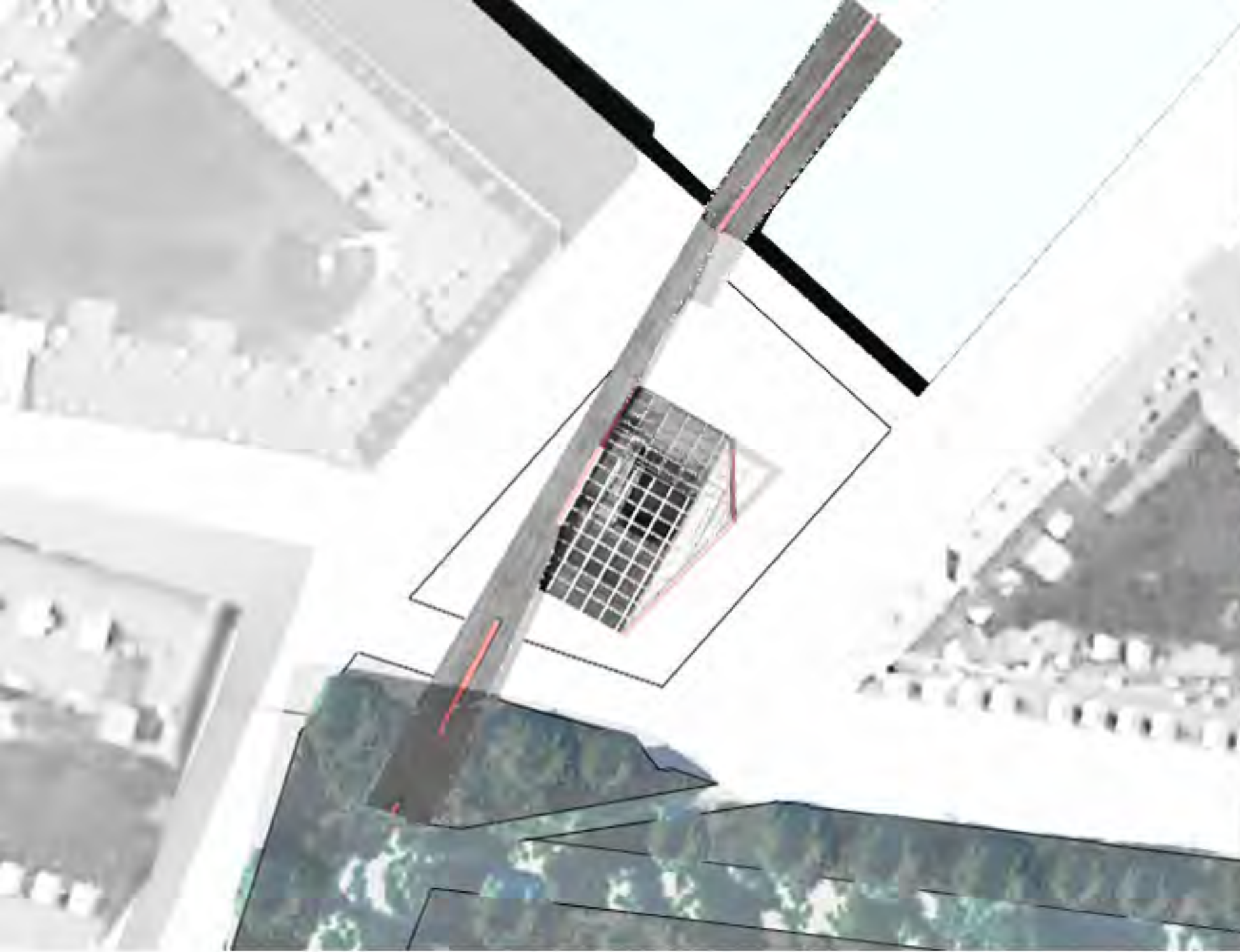


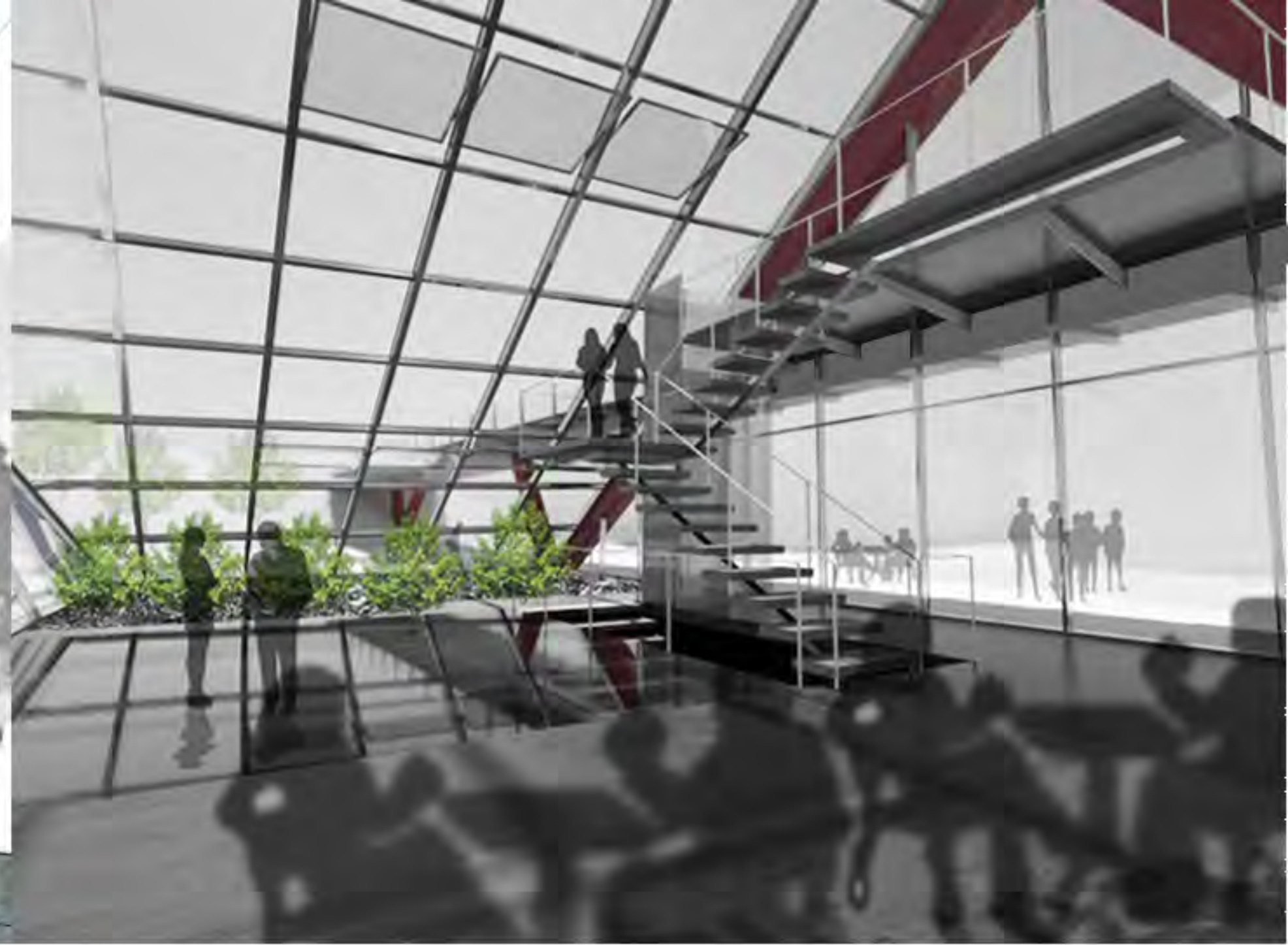
Diagram 1. Given the non-existing nature the bridge was designed as the connector between nature and the urban environment, linking Christianhavn residents to the beautiful landscape of the Old fortification of the city.

Diagram -2. The bridge extends the natural landscape of the fortification into the site by housing an enclosed community garden to create a nexus of environmental education and social interaction.

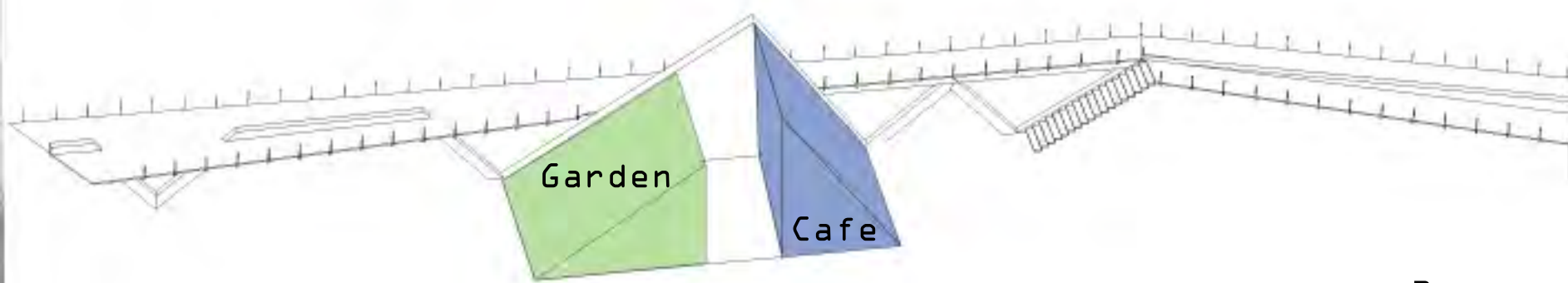




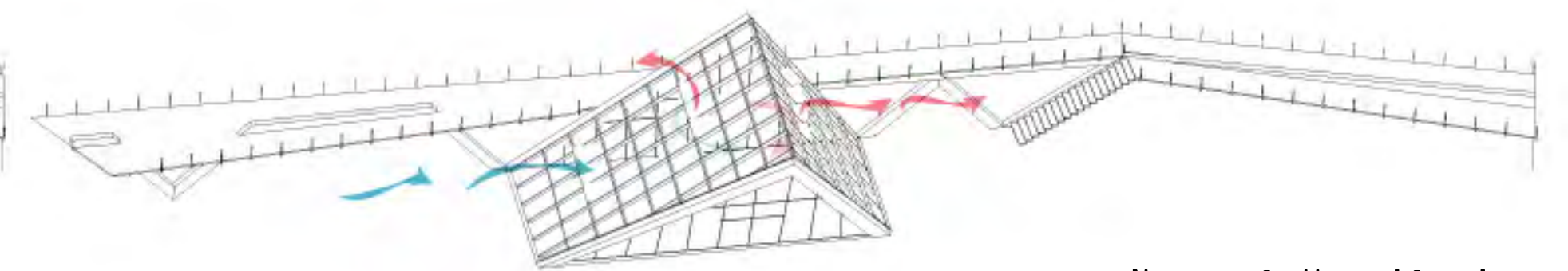
Site Plan



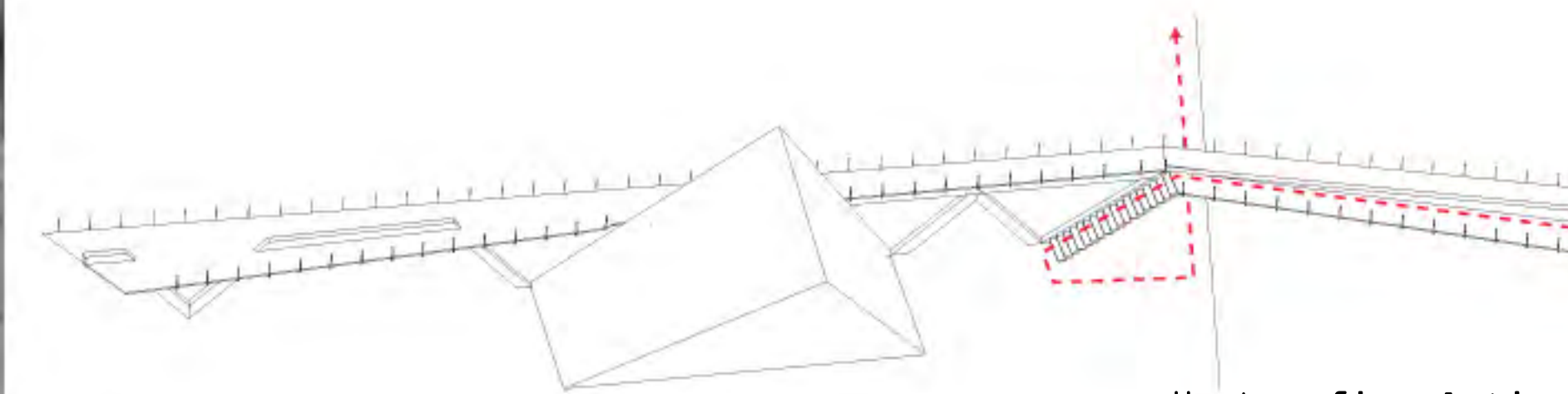
Interior Perspective



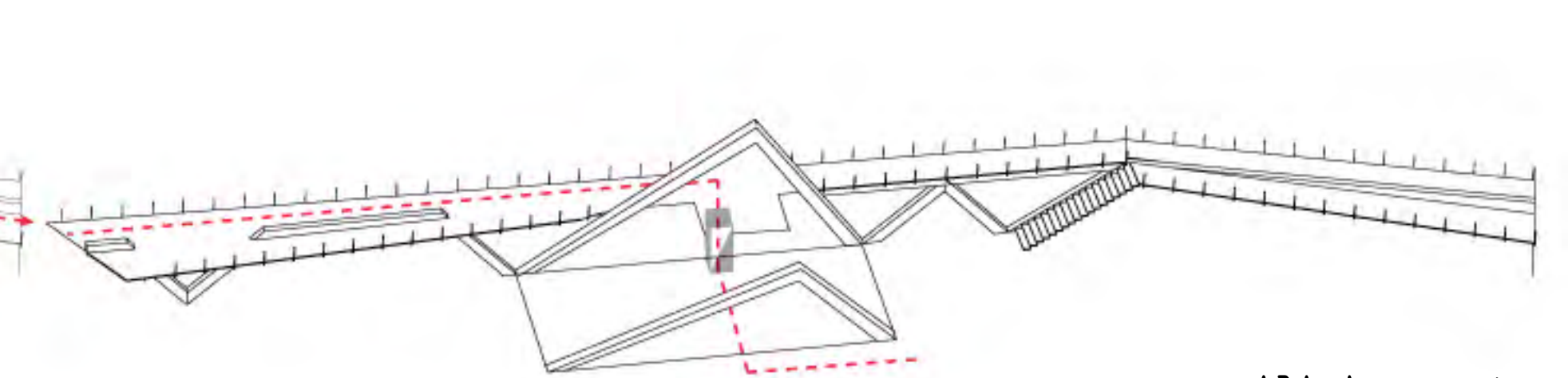
Program



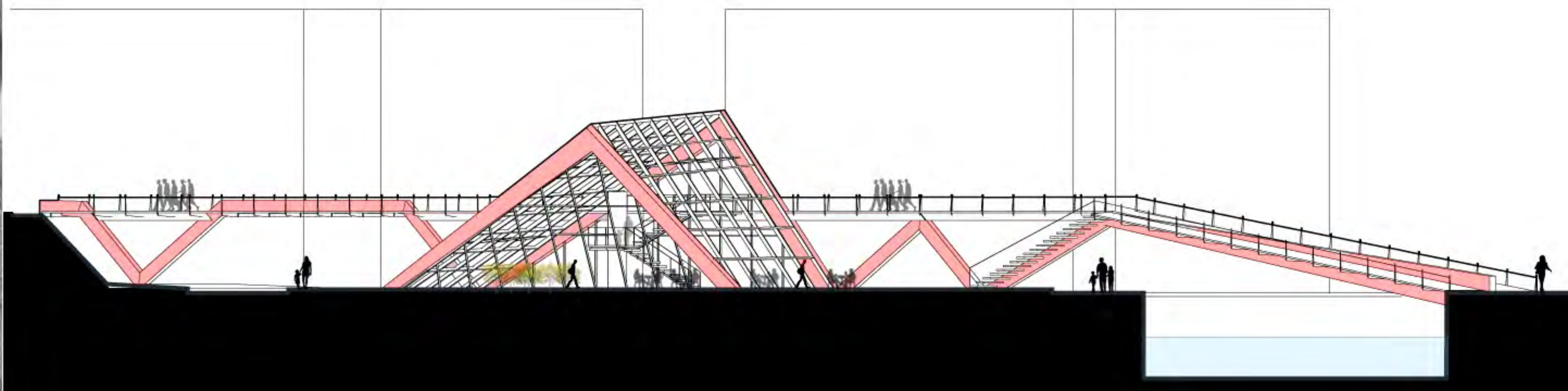
Natural Ventilation



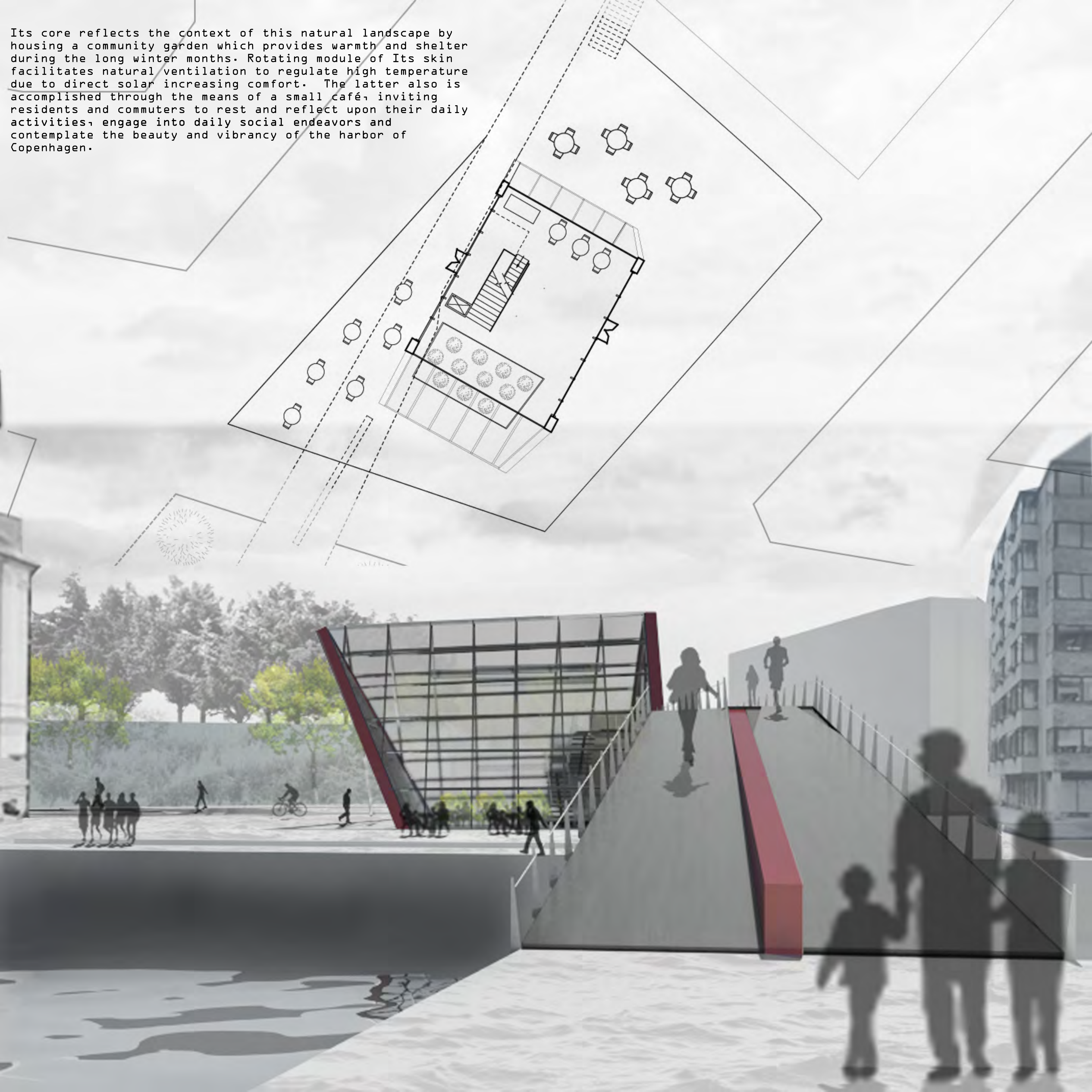
Harbor Circulation



ADA Access to Bridge



Its core reflects the context of this natural landscape by housing a community garden which provides warmth and shelter during the long winter months. Rotating module of Its skin facilitates natural ventilation to regulate high temperature due to direct solar increasing comfort. The latter also is accomplished through the means of a small café, inviting residents and commuters to rest and reflect upon their daily activities, engage into daily social endeavors and contemplate the beauty and vibrancy of the harbor of Copenhagen.



Reinforced
Concrete Deck

H-Beam supporting
concrete deck

Secondary Steel
Beam

Primary Continous
Steel Beam System

Stainless Steel
Curtain Wall System
with Operable Bays

Tilted triangular
Shaped Beam System
shaping the garden

